

### Inspection photos

Place:

Road:

Date:

section number:

PLR:



Photo: 4\_12a, 00:02:11  
18.8m, Hole in sewer at 12 o'clock

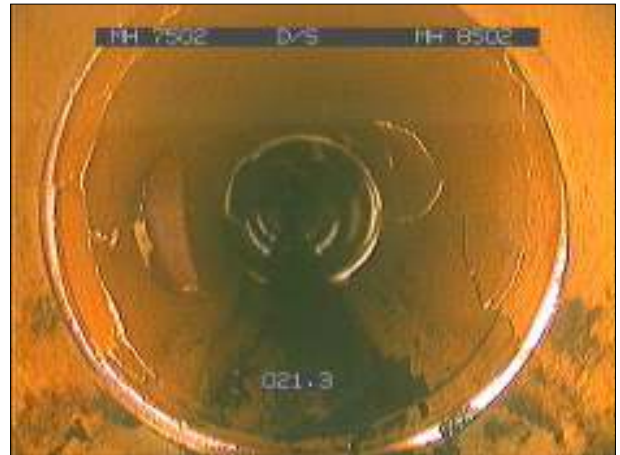


Photo: 4\_14a, 00:02:38  
21.3m, Multiple Fractures from 12 to 12 o'clock



Photo: 4\_30a, 00:06:09  
48.7m, Multiple Fractures from 12 to 12 o'clock



Photo: 4\_35a, 00:06:35  
50.5m, Sewer Broken, at 12 o'clock

## Inspection photos

Place:

Road:

Date:

section number:

PLR:



Photo: 4\_36a, 00:06:40  
50.5m, Circumferential Fracture, from 09 to 11 o'clock



Photo: 4\_41a, 00:07:26  
55.3m, Circumferential Fracture at joint, from 03 to 05 o'clock



Photo: 4\_45a, 00:08:39  
61.8m, Longitudinal Fracture at joint at 07 o'clock



Photo: 4\_47a, 00:08:54  
62.7m, Circumferential Crack at joint, from 12 to 12 o'clock

## Inspection photos

Place:

Road:

Date:

section number:

PLR:



Photo: 4\_60a, 00:11:57

88m, Circumferential Fracture at joint, from 07 to 09 o'clock



# Inspection report

Date:	Job nr.:	Weather:	Operator:	section number:	PLR:
Present:	Vehicle:	Camera:	Preset:	Cleaned:	Grade:

1:124	position	code	observation	MPEG	photo	grade
	17.30	CLJ	Longitudinal Crack at joint, at 12 o'clock	00:03:35		(Struct) 2
	20.40	JN	Junction at 03 o'clock, dia 100 mm	00:04:03		(Constr) 0
	23.50	CCJ	Circumferential Crack at joint, from 09 to 01 o'clock	00:04:23		(Struct) 2
	25.60	CC	Circumferential Crack, from 06 to 08 o'clock	00:04:38		(Struct) 2
	26.50	JN	Junction at 09 o'clock, dia 100 mm	00:04:49		(Constr) 0
	28.80	CCJ	Circumferential Crack at joint, from 07 to 05 o'clock	00:05:16		(Struct) 2
	30.00	JN	Junction at 03 o'clock, dia 100 mm	00:05:26		(Constr) 0
	33.20	FCJ	Circumferential Fracture at joint, from 01 to 05 o'clock	00:05:47	139_30a	(Struct) 3
	33.50	CX	Connection defective, at 03 o'clock, dia 100 mm, Remark: INVERT MISSING IN CN	00:06:03	140_31a	(Constr) 4
	40.50	JN	Junction at 10 o'clock, dia 100 mm	00:06:51		(Constr) 0



# Inspection report

Date:	Job nr.:	Weather:	Operator:	section number:	PLR:
Present:	Vehicle:	Camera:	Preset:	Cleaned:	Grade:

1:124	position	code	observation	MPEG	photo	grade
	42.90	FCJ	Circumferential Fracture at joint, from 12 to 04 o'clock	00:07:05		(Struct) 3
	43.00	JN	Junction at 03 o'clock, dia 100 mm	00:07:10		(Constr) 0
	43.80	H	Hole in sewer at 03 o'clock	00:07:19	144_35a	(Struct) 4
	45.30	CNI	Connection, at 03 o'clock, dia 100 mm, intrusion 40 mm	00:07:32	145_36a	(Constr) 4
	45.30	CN	Connection, at 09 o'clock, dia 100 mm	00:07:44		(Constr) 0
	45.60	SA	Survey abandoned, Remark: DUE TO INTRUDER	00:08:26		(Misc) 0

Structural Defects

Constructional Features

Service Defects

Miscellaneous Features

## Inspection photos

Place:

Road:

Date:

section number:

PLR:



Photo: 112\_4a, 00:00:17  
0m, Circumferential Fracture, from 07 to 02 o'clock



Photo: 114\_6a, 00:00:30  
0m, Longitudinal Fracture at 03 o'clock



Photo: 5\_10a, 00:01:04  
4m, Encrustation light, from 03 to 05 o'clock, Remark: FROM JN



Photo: 5\_17a, 00:02:15  
11.8m, Multiple Cracks, from 08 to 04 o'clock

## Inspection photos

Place:

Road:

Date:

section number:

PLR:



Photo: 5\_18a, 00:02:49  
12.4m, Hole in sewer at 12 o'clock



Photo: 139\_30a, 00:05:47  
33.2m, Circumferential Fracture at joint, from 01 to 05 o'clock



Photo: 140\_31a, 00:06:03  
33.5m, Connection defective, at 03 o'clock, dia 100 mm,  
Remark: INVERT MISSING IN CN



Photo: 144\_35a, 00:07:19  
43.8m, Hole in sewer at 03 o'clock

### Inspection photos

Place:

Road:

Date:

section number:

PLR:



Photo: 145\_36a, 00:07:32  
45.3m, Connection, at 03 o'clock, dia 100 mm, intrusion 40 mm



# Inspection report

Date:	Job N°:	Weather:	Operator:	section number:	PLR:
Present:	Vehicle:	Camera:	Preset:	Cleaned:	Grade:

Road:	Division: <b>Z</b>	start MH: <b>8403</b>
Place:	District: <b>Z</b>	end MH: <b>8501</b>
Location: <b>Main road - suburban/rural</b>	Tape No.:	Total length: <b>3.9 m</b>

Purpose: <b>Asset condition</b>	Shape/Size: <b>Circular 225</b>
Use: <b>Foul</b>	Material: <b>Vitrified clay</b> Pipe length: <b>Z</b>
Catchment:	Lining:
	Category: <b>Z</b>

Comment:  
Location details:

1:50	position	code	observation	MPEG	photo	grade
	0.00	ST	Start of Survey	00:00:00		(Misc) 0
	0.00	MH	Manhole Remark: 8403	00:00:00		(Constr) 0
	0.00	WL	Water level, 10 % height/diameter	00:00:00		(Serv) 0
	0.00	FL	Longitudinal Fracture at 09 o'clock	00:00:00	151_4a	(Struct) 3
	0.00	FL	Longitudinal Fracture at 12 o'clock	00:00:00	152_5a	(Struct) 3
	0.00	FL	Longitudinal Fracture at 02 o'clock	00:00:00	153_6a	(Struct) 3
	0.00	FCJ	Circumferential Fracture at joint, from 03 to 05 o'clock	00:00:19	154_7a	(Struct) 3
	0.00	CN	Connection, at 02 o'clock, dia 100 mm	00:00:29		(Constr) 0
	0.00	B	Sewer Broken, at 02 o'clock	00:00:34		(Struct) 4
	0.60	JN	Junction at 09 o'clock, dia 100 mm	00:00:43		(Constr) 0
	2.50	FC	Circumferential Fracture, from 01 to 10 o'clock	00:00:56	158_11a	(Struct) 3
	3.90	CNI	Connection, at 09 o'clock, dia 100 mm, intrusion 40 mm	00:01:21	159_12a	(Constr) 4
	3.90	CN	Connection, at 03 o'clock, dia 100 mm	00:01:24		(Constr) 0
	3.90	GO	General Observation, Remark: CROSS OVER REACHED	00:01:26		(Misc) 0
				00:01:41		(Misc) 0

Structural Defects	Constructional Features
Service Defects	Miscellaneous Features

**Inspection photos**

Place:

Road:

Date:

section number:

PLR:



Photo: 151\_4a, 00:00:00  
0m, Longitudinal Fracture at 09 o'clock



Photo: 152\_5a, 00:00:00  
0m, Longitudinal Fracture at 12 o'clock



Photo: 153\_6a, 00:00:00  
0m, Longitudinal Fracture at 02 o'clock



Photo: 154\_7a, 00:00:19  
0m, Circumferential Fracture at joint, from 03 to 05 o'clock

## Inspection photos

Place:

Road:

Date:

section number:

PLR:



Photo: 158\_11a, 00:00:56  
2.5m, Circumferential Fracture, from 01 to 10 o'clock



Photo: 159\_12a, 00:01:21  
3.9m, Connection, at 09 o'clock, dia 100 mm, intrusion 40 mm

## Inspection photos

Place:

Road:

Date:

section number:

PLR:



Photo: 247\_5a, 00:00:48  
8.2m, Sewer Material changes at this point, Cast iron



Photo: 248\_6a, 00:00:53  
8.2m, Encrustation heavy, from 07 to 05 o'clock, 25% cross-sectional area loss

**Inspection photos**

Place:

Road:

Date:

section number:

PLR:



Photo: 267\_9a, 00:01:34  
9.5m, Joint displaced. Medium



Photo: 274\_16a, 00:03:28  
33.1m, Circumferential Fracture, from 07 to 01 o'clock



Photo: 283\_25a, 00:06:54  
79.9m, Hole in sewer at 12 o'clock, Remark: AT JOINT

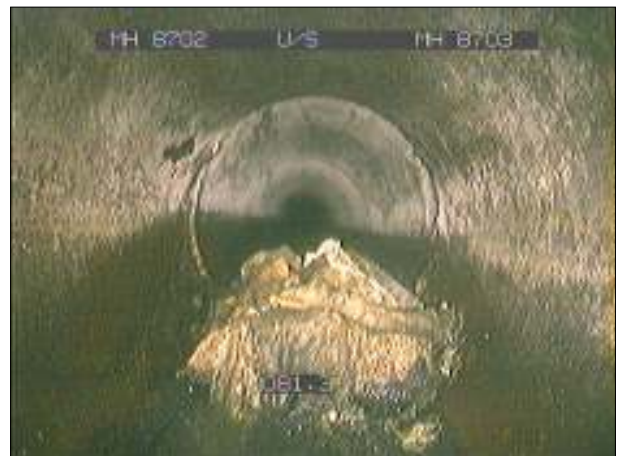


Photo: 284\_26a, 00:07:08  
81.3m, Obstruction, 50 % height/diameter loss, Remark: SCALE, RAG AND FAT LUMP